

# 21 WEAVERS COTTAGES HORSEFAIR KIDDERMINSTER WORCESTERSHIRE DY10 2EN

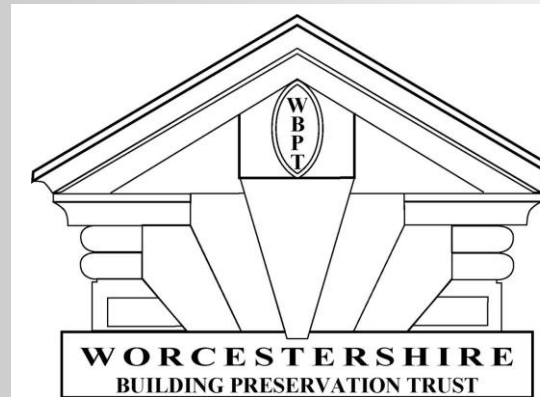
## TENDER INFORMATION

We are inviting best and final offers for the property on the following basis

- (1) Offers should be made in writing only using a sealed envelope marked '21 Weavers Cottages, Kidderminster' and received by 12 noon on Friday 2 June, 2017.
- (2) Offers must be for a specific figure and expressed in pounds sterling. As a recommendation prospective purchasers are best advised to make their offer for an uneven sum – therefore not a round number - to avoid the possibility of identical bids.
- (3) All offers must be for a fixed sum. We will not consider any escalating bids or an offer where the amount depends on another offer
- (4) Faxed or emailed offers will only be accepted by prior arrangement with the Selling Agents.
- (5) The offer letter should clearly state the full name and address of the hopeful purchaser(s), together with details of the Solicitor who will be acting on their behalf. If there is a related sale then details for your own Estate Agent will also be required and any 'chain' details would also be extremely helpful.
- (6) Prospective purchasers should also clearly indicate whether the amount offered is a cash offer, or subject to a mortgage and this information will be subject to verification before any offer is accepted.
- (7) By 'verification', the successful party will be required to provide documentary evidence of the existence of cash funding by way of a supporting bank statement etc and/or a mortgage agreement in principle (AIP), before their offer is accepted Subject to Contract. It would therefore be of great advantage if it is possible to include this information alongside the offer letter itself.
- (8) At the closing date, the Selling Agents will report all offers received in writing to the Seller and accordingly the Seller will instruct the Selling Agents which offer they wish to accept subject to contract.
- (9) The Seller is not bound to accept any offer should none of the offers received be of an acceptable amount or nature. Similarly, the Seller is not necessarily bound to accept the highest offer received.
- (10) The Sellers decision shall be final and the Selling Agents are instructed not to seek or accept any further offers after the stated closing date and time for offers.



General Rear Aspect



## 21 WEAVERS COTTAGES HORSEFAIR KIDDERMINSTER WORCESTERSHIRE DY10 2EN



LOTTERY FUNDED



### Grade II Listed Two-Bedroom Mid Terraced Cottage

For Sale by Informal Tender - Under Instructions From The Worcestershire Building Preservation Trust (WBPT)

Everything you wanted, nothing you expected. Here is something quite extraordinary for the open market. The extreme - yet for the lucky purchasers' and indeed Kidderminster itself, richly rewarding - concept of conservation before cost!

An iconic Grade II Listed Weavers' Cottage painstakingly repaired by a fantastic Registered Charity called The Worcestershire Building Preservation Trust Ltd (WBPT) and without question one of the most amazing period properties that you will see in this price bracket locally! What's on offer at such an affordable price is almost unbelievable with intriguing original features, brand new high quality fittings including a log burner and a meticulous finish combining to create this gorgeous historic home renovated to the most exacting standards utilising a big budget way in excess of its market value. However, profit has not been the point - the focus is perfection in conservation which has been achieved! To call this a rare opportunity doesn't even come close! **STOURPORT OFFICE 01299 822060**

**BEST AND FINAL OFFERS, IN WRITING TO STOURPORT OFFICE BY 12 NOON ON FRIDAY 2 JUNE, 2017.**

**PRICE: OFFERS BASED ON £129,950**

[www.phippsandpritchard.co.uk](http://www.phippsandpritchard.co.uk)

**Kidderminster** 01562 822244    **Stourport-on-Severn** 01299 822060    **Tenbury Wells** 01584 811999    **Clebury Mortimer** 01299 270301    **Lettings** 01562 861886

**PHIPPS & PRITCHARD WITH MCCARTNEYS** is the trading name of McCartneys LLP which is a limited Liability Partnership - Registered in England & Wales, Number: OC310186  
**REGISTERED OFFICE:** McCartneys LLP, The Ox Pasture, Overton Road, Ludlow, Shropshire, SY8 4AA  
**MEMBERS:** Chairman: GR Owens, FRICS, FAAV, FLAA · GJ Fowden FNAEA FNAVA, MARLA · CC Roads FLAA · MR Edwards MRICS, FNAEA, FCIQB · CW Jones FAAV, FLAA · GR Wall MRICS, MBIAC, MNAVA, FAAV, FLAA · JG Williams BSc (Hons) MRICS · JM Layton Mills BSc (Hons) MRICS, FAAV, FLAA · DA Hughes BSc, MRICS, MCIQB · DA Anderson MNAEA, MARLA · TW Carter BSc (Hons) MRICS, MNAEA · M Kelly · MW Thomas ALAA, MNAVA · N Millinchip DipSurvPract, MNAEA · ZE Herbert DipREA, FNAEA · SW Edwards BA (Hons) PGDipSurv, MRICS, IRRV (Hons) · MA Fish · KH Morris BSc (Hons), MRICS, FAAV · JM Tulloch MNAEA, MICBA  
**ASSOCIATE MEMBERS:** A Kirk · GO Jones BSc (Hons), MRICS · PP Blackman-Howard ANAVA  
**PARTNERSHIP SECRETARY:** D Hulland  
**CONSULTANTS:** RS Gwilliam FRICS, FAAV, FLAA · LD Thomas FRICS, FAAV · TW Jones FRICS · RR Williams BSc, FRICS · CJ Smith FRICS · J Uffold BSc (Hons) MRICS, FAAV, FLAA, MNAEA  
**REGIONAL OFFICES:** Brecon, Bridgnorth, Builth Wells, Craven Arms, Hay-on-Wye, Kidderminster, Kington, Knighton, Llandrindod Wells, Ludlow, Newtown, Presteigne, Rhayader, Stourport-on-Severn, Tenbury Wells, Welshpool, Worcester and associated Office in Mayfair, London.

**PROPERTY MISDESCRIPTIONS ACT:** We have not tested services, fittings and appliances such as central heating, immersion heaters, fires, wiring, security systems and kitchen appliances. Any Purchaser should obtain verification they are in working order through their Solicitor or Surveyor. We have not verified details of tenure. The Solicitor acting for any purchaser should be asked to confirm full details. Phipps & Pritchard with McCartneys for themselves and the vendors of the property whose Agents they are, give notice that these particulars although believed to be correct, do not constitute any part of an offer or contract, that all statements contained in these particulars as to this property are made without responsibility and are not to be relied on as statements or representations or warranty whatever in relation to this property. Any intending purchaser must satisfy himself by inspection or otherwise as to the correctness of each of the statements contained in these particulars.  
**MEASUREMENTS:** Quoted room sizes are approximate & only intended for general guidance. They have been rounded up/down to the nearest .076m (3"). You are particularly advised to verify all dimensions carefully, especially when ordering carpets, built-in furniture or fittings. Land areas are also subject to verification through legal advisors.



## INTRODUCTION -

• For Sale by Informal tender with best and final offers in writing for Friday 2 June 2017. The sale is being handled by the Stourport-on-Severn Office of Phipps & Pritchard with McCartneys, 1 High Street, Stourport, DY13 8DJ – 01299 822060

• Virtual tour available - click the link for a full walk through!

• A sensational landmark restoration of three iconic Grade II Listed Weavers' Cottages' fully repaired by The Worcestershire Building Preservation Trust Ltd.

• £1million in grants and loans were raised to fund this project including £730,000 from the Heritage Lottery Fund. (HLF) [www.hlf.org.uk](http://www.hlf.org.uk)

• All works undertaken at the pinnacle of current building standards by eminent specialist contractors Croft Building & Conservation Ltd of Cannock with the highest level of skill and craftsmanship imaginable. [www.croftbc.com](http://www.croftbc.com)

• Works also undertaken under the auspices of specialist Chartered Conservation Architects – Rodney Melville + Partners. [www.rodneymelvilleandpartners.com](http://www.rodneymelvilleandpartners.com)

• Full peace of mind with a 12 year Construction Industry Council Collateral Warranty

• Completely re-equipped with high quality fitments and stunning bright interiors.

• Well preserved original features.

• Living Room with multi-fuel stove PLUS new gas central heating system served by combination boiler.

• Off Road Parking Space and turfed rear garden also with patio and useful outbuilding.

• Prominent fringe of town centre position.

• Freehold

• Remarkable opportunity sure to absolutely delight lovers of fine character property.

• Will appeal to both owner occupiers and those seeking a high calibre buy to let investment.

• Would also suit as a 'lock up and leave' second home.

• In the market to be sold straightaway and priced to attract immediate interest from able buyers with no chain.

• Ready for immediate occupation!

## The Saving Of Weavers' Cottages

This property is one of only 3 Grade II Listed Weavers' Cottages now offered for sale by The Worcestershire Building Preservation Trust. These three cottages are the sole physical reminder of Kidderminster's cloth industry which sustained the town for several centuries prior to the growth of the carpet industry in the 19th century. Each one possessed an attic workshop.

For more than a generation this landmark terrace of three cottages on the Horsefair in Kidderminster stood empty and neglected and was considered an eyesore by many in the town. But for the interest of the Kidderminster Civic Society these shabby little buildings may well have been swept away for new development. But, those in the know recognised that these buildings were a unique survivor of a trade in the town that pre-dated the much better known carpet weaving industry.

Research had revealed that the oldest cottage of the group, which dates from the first half of the 1700s, was built as an artisan dwelling with a workshop on the top floor for the weaving of bombazine. Bombazine was dress fabric woven with silk and wool and often dyed black for use in mourning clothes. All three cottages represent some of the earliest surviving houses in the town and still contain original staircases. In February 2000 the three cottages were listed grade II by English Heritage giving them protection from demolition for the simple reason that it is extremely rare for such places to have survived! However, the battle was still on to save them.

By this time the cottages were in a very poor state and the cost of repairing them and bringing them back into use would far exceed their end market value. To lose the cottages at this stage would have been a tragedy for Kidderminster's heritage, so in 2009, Worcestershire Building Preservation Trust stepped in to find a way of saving them.

Worcestershire Building Preservation Trust is a registered charity, the aims of which are to save buildings of architectural or historic importance that are at risk of being lost. The Trust commissioned conservation Architects Rodney Melville and Partners to design a scheme for the cottages to show that they could be sensitively repaired and converted for use as homes for the 21st century. Planning permission and listed building consent were granted and over £1million in grants and loans were raised including £730,000 from the Heritage Lottery Fund. Building contractors Croft Building and Conservation Ltd were chosen by the Trust to implement the scheme and works commenced in February 2016. Roofs were stripped and old tiles salvaged for re-use on no 22, an old chip shop addition was taken down and ugly 20th century render was removed from the front elevation to reveal the original brickwork. Removal of the render revealed an old painted 'ghost' sign on the front of no 21- 'A Wakefield High Class Confectioner'. It is believed the sign dates from sometime after 1911 and it is to be retained as a feature of the cottages. New bathroom and kitchen extensions have been added to the rear, hence preserving the historic plan of the 18th century buildings, including their twisting staircases. The properties also each have a parking space and rear garden.

## Accommodation On Offer

This exemplary historic home is truly only full appreciated by personal inspection and simply cannot fail to impress. A delightful spread of accommodation is protected by an alarm system and afforded over three floors to comprise:-

**Access is gained via door to:-**

**LIVING ROOM** - 13' 5" x 10' 10" (4.08m x 3.30m) [max measurements in to alcove] with central heating radiator, secondary glazed window to front elevation, fireplace with 'Flavell' multi-fuel stove and fitted cupboard housing electricity meter and distribution board protecting the electrical installation, door to:

**FITTED KITCHEN** - 10' 10" x 7' 5" (3.29m x 2.27m) with central heating radiator, window to rear elevation, range of wall and base

mounted kitchen units with complementary roll top surface over, having inset stainless steel sink unit and inset 'Hotpoint' gas hob, built-in 'Hotpoint' electric oven, built-in under-stairs storage cupboard, door to:

**VESTIBULE/UTILITY** - 5' 9" x 4' 2" (1.74m x 1.28m) with door to side elevation opening to outside, fitted roll top surface and plumbing and space for automatic washing machine plus fitted wall cupboard also neatly concealing 'Glow Worm Energy 30c' condensing combination boiler, door to:

**CLOAKROOM/WC** - with central heating radiator, obscured window to side elevation, concealed cistern wc and pedestal hand wash basin.

**From the Living Room a staircase rises to:-**

**FIRST FLOOR LANDING** - with two down-lighters, two built-in double door cupboards and doors to:

**BEDROOM TWO** - 10' 10" x 10' 10" (3.31m x 3.30m) [max measurements in to alcove] with central heating radiator, secondary glazed window to front elevation, recessed chimney breast and built-in under-stairs cupboard.

**BATHROOM** - 8' 3" x 7' 7" (2.51m x 2.30m) with four down-lighters, central heating radiator, obscured window to rear elevation, roof light to side aspect, concealed cistern wc, fitted hand wash basin and bath.

**From the Landing a further staircase rises to:-**

**SECOND FLOOR THROUGH BEDROOM ONE** - 13' 5" x 10' 11" (4.09m x 3.32m) [max measurements also including chimney breast] with central heating radiator, secondary glazed window to front elevation, further window to rear elevation and recessed chimney breast.

**OUTSIDE:-**

**ALLOCATED PARKING SPACE -**

**GARDEN** - [NB: please note that there is a traditional right of way across for number 20 Weavers Cottages] with cold tap, patio area and lawned garden area.

**BRICK BUILT ADJOINING STORE** - 6' 10" x 3' 5" (2.08m x 1.04m) with light and power points.

**SERVICES:** Mains services connected to the property include water, gas, electricity and mains drainage. There is also a 'Virgin Media' TV connection.

**TENURE: Freehold.** We have not verified details of tenure. The Solicitor acting for any purchaser should be asked to confirm full details.

**FIXTURES & FITTINGS:** Any fixtures and fittings not mentioned in these Sale Particulars are excluded from the sale. Certain fixtures and fittings may be available by separate negotiation with the vendors.

**VIEWING:** By appointment with the agent's offices.

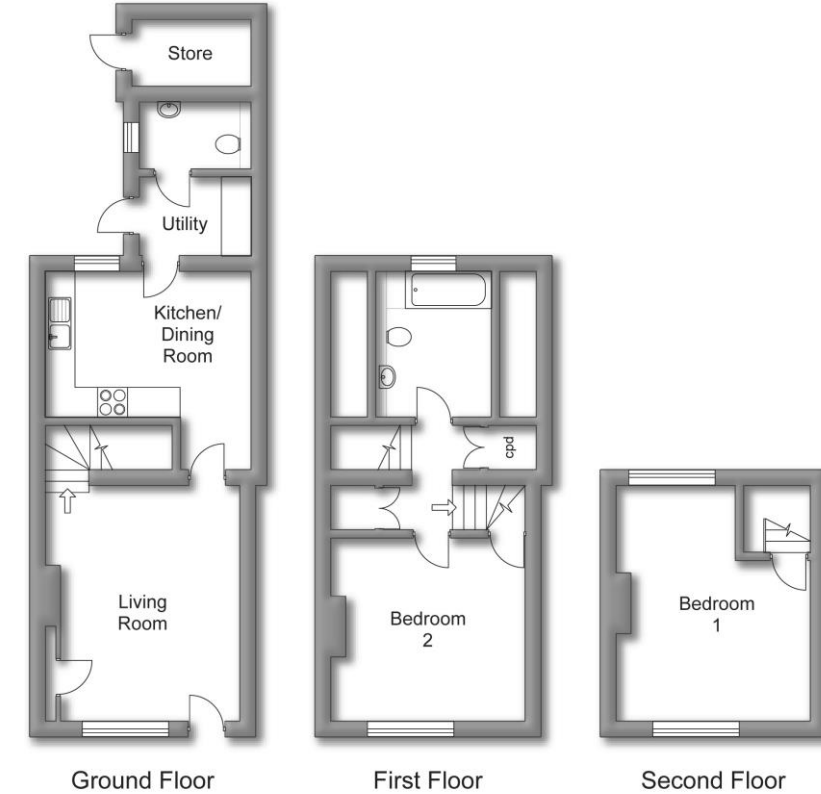
**MORTGAGE ADVICE:** Phipps & Pritchard Financial Services Ltd computerized software enables advice to be given on the whole of the market which shows a clear comparison between lenders interest

rates and fees. Contact Mr Nigel Clee at the Kidderminster office. Authorised and regulated by the Financial Conduct Authority.

**SURVEYS & VALUATIONS:** Phipps & Pritchard with McCartneys carry out Homebuyers Reports & Valuations. Should you purchase a property from another Agent, or a Private Vendor, we would welcome your enquiry and be pleased to discuss your requirements. Please contact David Hughes at our Survey Department on 01584 813766 for further information.

**Find us on the following websites:**  
[www.phippsandpritchard.co.uk](http://www.phippsandpritchard.co.uk)  
[www.onthemarket.com](http://www.onthemarket.com)  
[www.rightmove.co.uk](http://www.rightmove.co.uk)

**OFFICE REF:** NM.JR.PSP06940.280417



For illustrative purposes only. Not to scale.  
Prepared by Making Plans Ltd - Tel : 0113 322 9204 - [www.makingplans.com](http://www.makingplans.com)